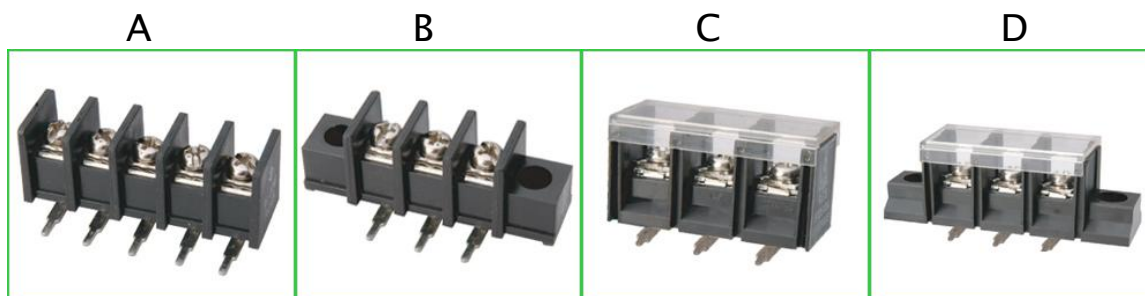


Barrier Terminal Block

-PCB series-

◆ Photo:

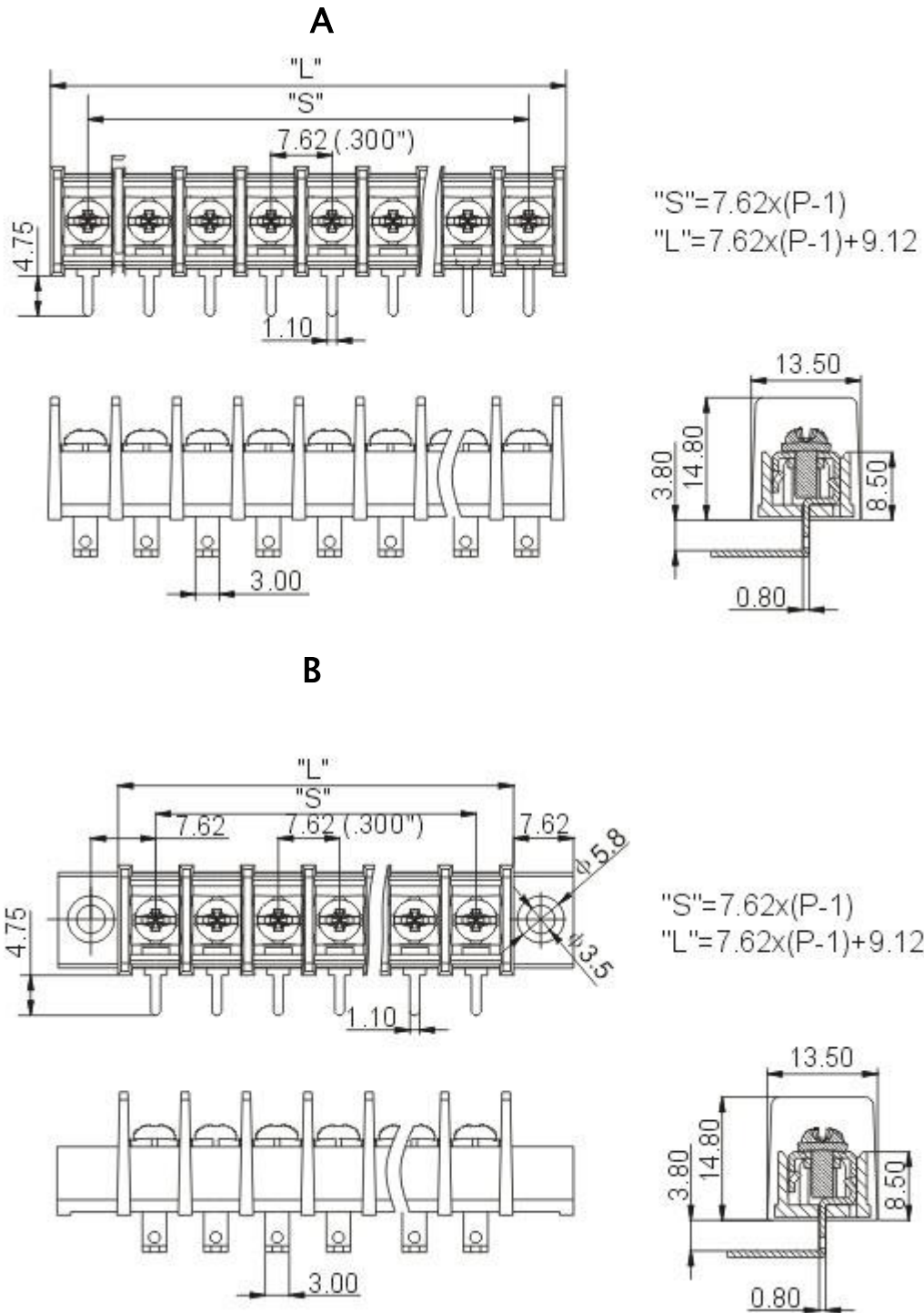


◆ 型 号/Model: *HB25R-7.62/8.25/9.5/10.0/13.0*

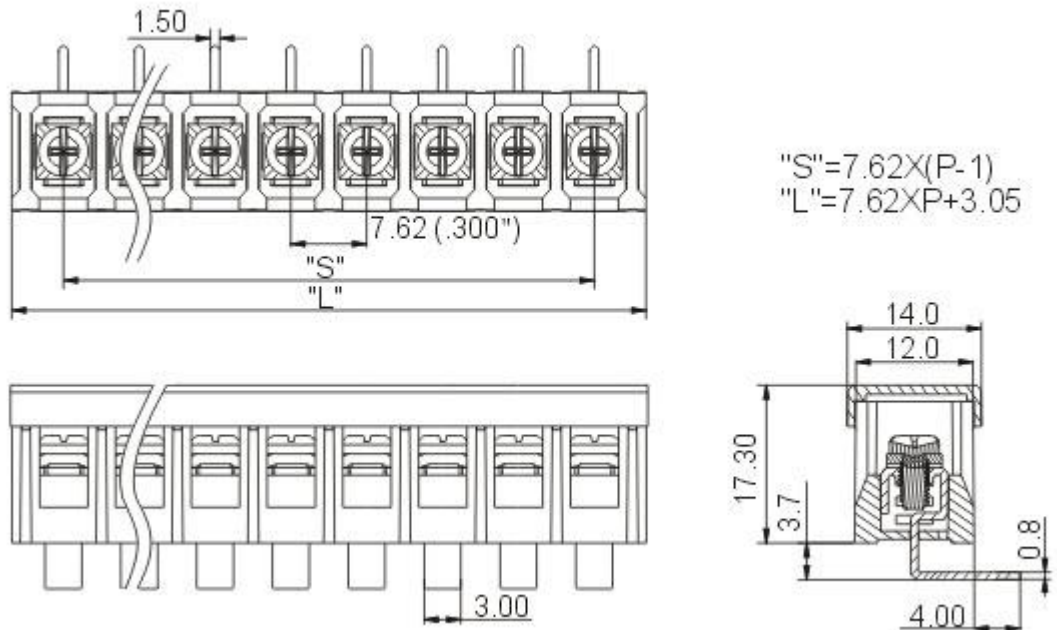
◇ 电气特性/Electronic Specification	
额定参数/Rated	300V 15A (20A) 600V 40A
接触电阻/Contact Resistance	20mΩ Max.
绝缘电阻/Insulation Resistance	5000 mΩ Min.
耐压强度/ Withstanding voltage	AC2000V/1Min
◇ 机械特性/Mechanical Specification	
使用温度/Temp Range	-40℃~+105℃
瞬时温度/MAX Soldering	+250℃ 5S
线 径/Wire Range	22-12AWG (2.5 mm ²)
◇ 尺寸: Dimensions	
间 距/Pitch	7.62/8.25/9.5/10.0/13.0
位 数/Poles	2-24P
◇ 部件材质/Part & Material	
塑 件/ Housing Plastic	PA66 UL94V-0
螺 丝/Screw	钢, 镀锌/Steel,Zn plating
弹 片/Wire Protector	磷铜, 镀镍/Bronze,Ni plating
端 子/Terminal	黄铜, 镀锡/Brass,Tin plating

◆ **Drawing:**

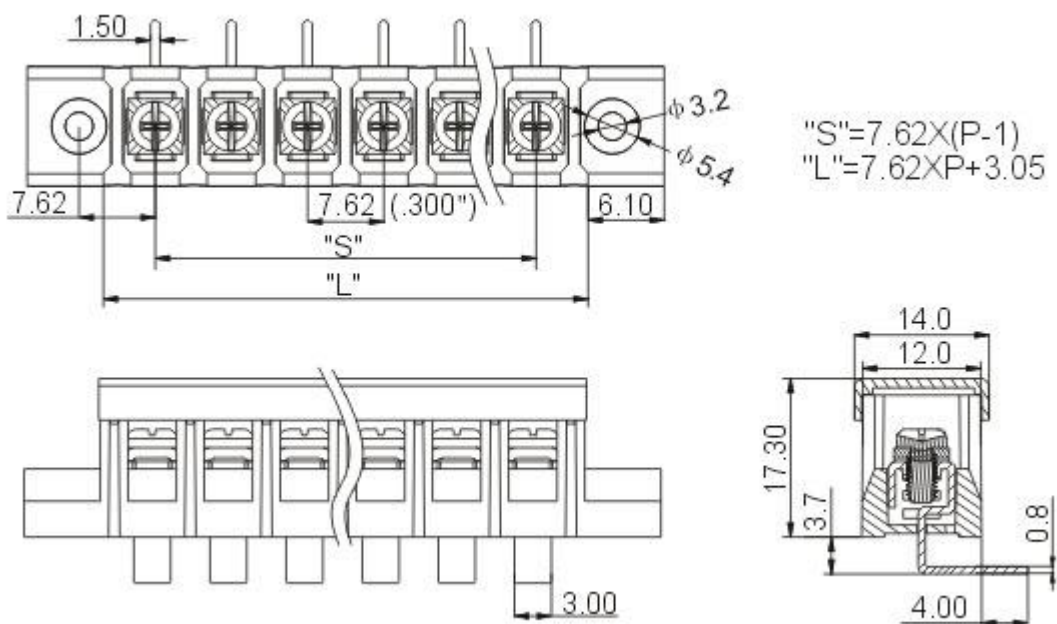
➤ **HB25R-7.62**



C



D



◆ **包装形式/Packing:** 采取标准纸箱包装/Standard Carton



◆ **订购方式/How to order:**

